

RETAIL SPACE FOR LEASE

# LOUISE BLOCK

1018 MACLEOD TRAIL SE, CALGARY AB



PRIME CORNER RETAIL WITH EXCEPTIONAL MACLEOD TRAIL EXPOSURE

**Gordon Woodman**

President, Retail Leasing & Sales  
403 471 2832  
gordon.woodman@kpliglobal.com

**Andreana Sebua**

Senior Associate  
403 608 7514  
andreana.sebua@kpliglobal.com

**Alexi Olcheski**

President & CEO  
403 971 5167  
alexi.olcheski@kpliglobal.com

**KPLI** GLOBAL

# LOUISE BLOCK

1018 MACLEOD TRAIL SE

Suite 100 2,643 sf

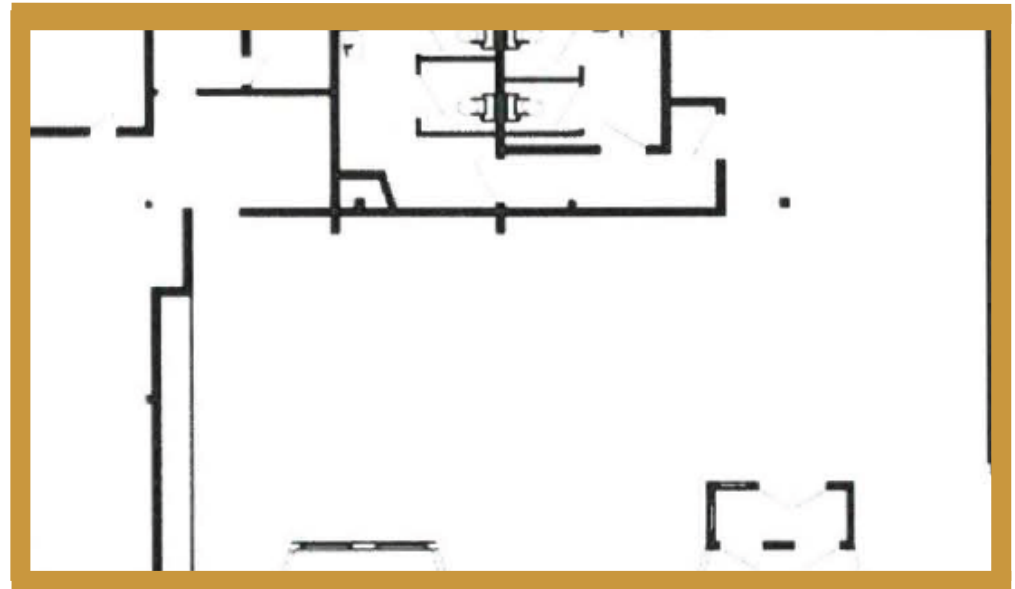
Building Size: 26,443 sf

Zoning: CC-X

Ceiling Height: 14' clear

## PROPERTY HIGHLIGHTS

- Signage exposure to 39,000 VPD along Macleod Trail
- Premises equipped with a fully functional restaurant MUA and exhaust hood
- Corner Suite
- Walking distance to downtown



# LOUISE BLOCK

1018 MACLEOD TRAIL SE

---



**Andreana Sebuia**

Senior Associate

403 608 7514

[andreana.sebuia@kpliglobal.com](mailto:andreana.sebuia@kpliglobal.com)



**Gordon Woodman**

President, Retail Leasing & Sales

403 471 2832

[gordon.woodman@kpliglobal.com](mailto:gordon.woodman@kpliglobal.com)

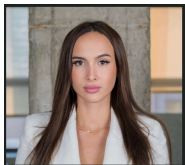


**Estelle Tran**

Managing Director

403 993 2898

[stelle.tran@kpliglobal.com](mailto:stelle.tran@kpliglobal.com)



**Anastasiya Gryshchenko**

Vice President

825 994 2314

[ana.gryshchenko@kpliglobal.com](mailto:ana.gryshchenko@kpliglobal.com)



**Alexi Olcheski**

President & CEO

403 971 5167

[alexi.olcheski@kpliglobal.com](mailto:alexi.olcheski@kpliglobal.com)



[KPLIGLOBAL.COM](http://KPLIGLOBAL.COM)

© 2025 KPLI Real Estate Corporation. All rights reserved.

